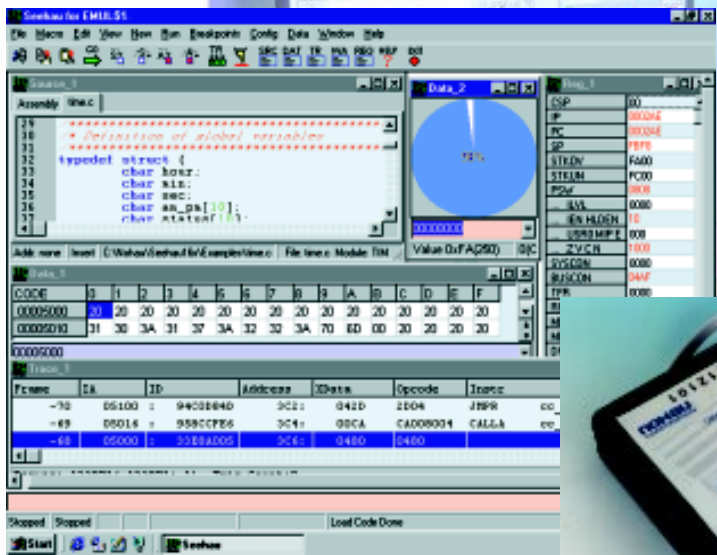


EMUL12-PC/BDM & EMUL16/300-PC/BDM BDM In-Circuit Emulator



Key Benefits

- All Motorola controllers with a BDM port are supported. This is from the HC12, HC16 and 683xx families.
- To the maximum controller clock rate.
- SeeHau Windows User Interface included. Windows 95/98/NT.
- Connects with the BERG connector.
- FLASH programmers available. (HC12 only)
- High Level Language (HLL) support for C compilers.
- Shadow RAM for real-time viewing.
- Supports all HC11 chip RESET modes.
- Easy upgrade path to full Nohau emulators.

Product Overview

Nohau offers two BDM (Background Debug Mode) emulators in addition to its full emulators for the Motorola HC12, HC16 and 683xx families. The EMUL12-PC/BDM and the EMUL16/300-PC/BDM emulators offer economical debugging for all CPU16, CPU32 and CPU32+ and HC12 microcontrollers. SeeHau, the new Windows user interface from Nohau, is standard and included with the emulator hardware.

Shadow RAM

Shadow RAM (HC12 only) allows data accesses in real-time to be displayed in the Data window. Shadow RAM is continuously updated in real-time. The data can be displayed in many numerical and graphical formats.

In-line Compiling and Assembling

SeeHau allows in-line compilation. Modify your C or assembly code in the appropriate window and SeeHau uses its powerful macro language to recompile, reload and rerun. In one step. SeeHau can perform many more sophisticated operations with its macro system.

What's the difference: a BDM and a Full Emulator

A BDM emulator does not have a trace memory, triggers or emulation memory. A BDM emulator is often used in conjunction with a full emulator. It can program FLASH and EEPROM into the HC12 controller on the target system.

What can you do with a BDM ?

You can load a program and single-step or run the target processor. Source code will be available for HLL debugging. Other options include setting software breakpoints (hardware in HC12), viewing memory in real-time (HC12), and programming FLASH with the optional programmer. Low voltage support is automatic. Variable, arrays and structures can be easily viewed in a variety of formats. The emulator runs at full clock speed. A BDM emulator is more robust than a monitor, but with less features than a full emulator.

Nohau emulators are Made in the USA. They are supported everywhere with a worldwide network of representatives.

See our web site for more information and call us today for the name of your local Nohau representative.

www.nohau.com



Cut Development Time

NOHAU

Nohau
275 E. Hacienda Avenue
Campbell, California 95008
Email: sales@nohau.com

Tel: (888) 886-6428
Tel: (408) 866-1820
Fax: (408) 378-7869
Web: www.nohau.com