

In-Circuit Emulator

Key Benefits

- ◆ Supports the Super10 devices with NEXUS
- ◆ Scalable support for Level II and III can be added later.
- ◆ Level I provides complex hardware breakpoints.
- ◆ Level II and III additionally provide trace with filtering
- ◆ Real-time operation to the full speed of the target controller.
- ◆ Full Nexus specification is used for transparent single-chip or external mode emulation.
- ◆ Connects to your target with a single 38-pin Mictor connector for Level I
- ◆ Dual 38-pin Mictor connectors for Level II and III.
- ◆ Advanced macro scripting language is easy to use and configure.
- ◆ Connects through your USB port. Portable laptop operation.
- ◆ RESET values for special function registers are easily set with a Seehau register window. Make multiple settings for easy recall.
- ◆ Seehau 32 Bit GUI: Windows 98, ME, XP and 2000

Product Description

Nohau adds NEXUS Level I, II and III support to its Super10 family of full in-circuit emulators. Level I support provides Watchpoint capabilities for complex Hardware Breakpoints. Breakpoints can occur based on Instruction pointer address, data addresses and data values. The Watchpoints also provide trigger in and trigger out for connections to other types of test equipment. Level II/III support adds trace and filtering.

Hardware and Software Breakpoints

Unlimited software breakpoints are offered as well as using the Watchpoints for complex hardware breakpoints or to generate a trigger out. You can set breakpoints by merely clicking in the source window and these can be temporarily "parked" for easy recall. Hardware breakpoints are useful for debugging in ROM. Both types of breakpoints are no-skid and do not execute the instruction they are set to.



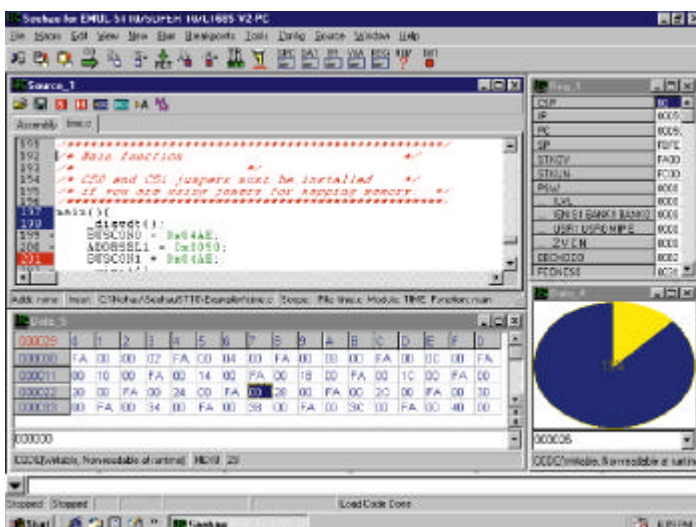
Level I Support

Nohau offers a scalable solution for NEXUS. Level I support provides run control, go, stop, source and assembly step and Watchpoint capabilities. The Watchpoints are used for generating trigger outs or complex breakpoints based on Instruction Pointer sequences or data address AND'd/OR'd with data values. To move up to Level II/III you can simply add the hardware NEXUS trace support to your existing level hardware.

Level II and III Support

The Level II and III support adds trace capabilities. The features available will be implementation specific. The emulator will customize the Trace Setup window to match the features available. They will consist of Watchpoints, Filters and Controls. Trigger in/out for connecting to other test equipment such as Digital scopes and Link In/Out to connect to other cores on a target.

Call Nohau today for your local representative or visit our website at www.nohau.com for further information.



Cut Development Time

Nohau

275 E. Hacienda Avenue
Campbell, California 95008

Email: sales@nohau.com

Tel: (888) 886-6428

Tel: (408) 866-1820

Fax: (408) 378-7869

Web: www.nohau.com