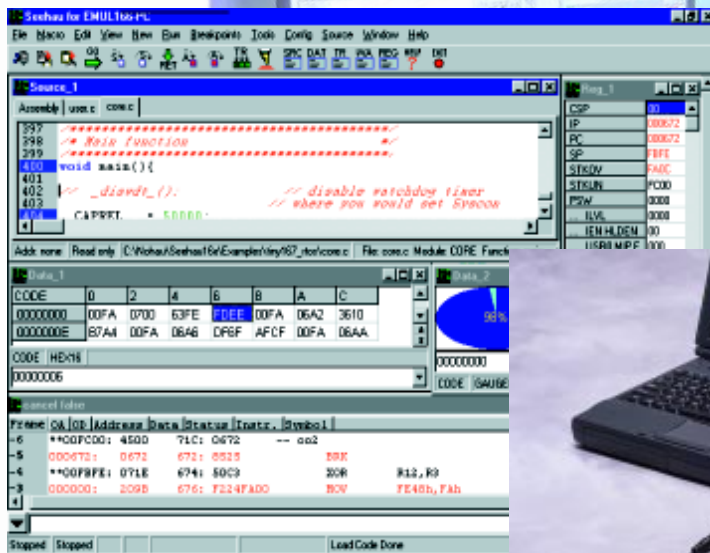
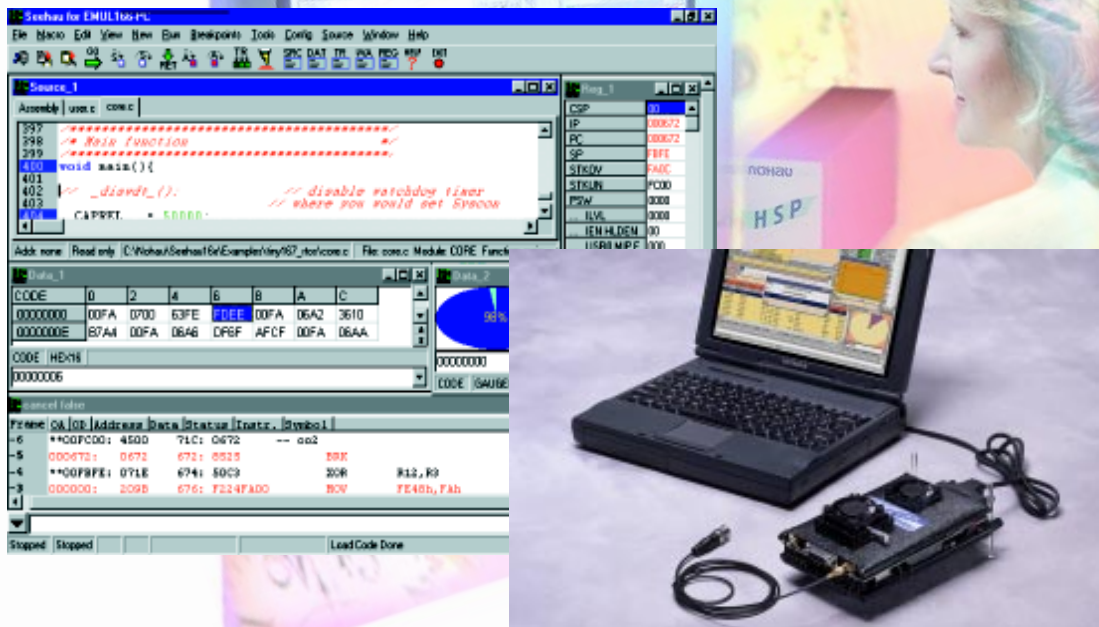


EMUL-ST10-PC

In-Circuit Emulator



Key Benefits

- Supports ST10 and Infineon C166 families.
- Up to 80 MHz real-time operation.
- Advanced ST bondout chip used for transparent RAM or ROM emulation. 50 and 80 MHz emulator versions are available.
- Compact two board advanced design goes anywhere you go.
- Connects through an ISA card or LPTx port.
- Shadow RAM for real-time memory viewing.
- Trace and triggers are viewed and modified in real-time & “on-the-fly” without stopping or slowing your target.
- The optional Trace board can be added later.
- Emulation memory granulation is only 32 bytes. 256K and 1 Mbyte emulation RAM models are available.
- Developed and Made in the USA.
- SeeHau User interface for Win 95, 98 & NT.
- Sophisticated conditional triggers: 7 levels plus filtering.

Product Description

Nohau refines its ST10 family offerings with three new emulators. The advanced EMULST10-PC increases emulation speed to 50 MHz. The EMUL-ST10-FA-PC runs at 80 MHz! They support all ST10 derivatives plus many from the Siemens C166 family. For more support, investigate the Nohau EMUL166-PC which supports all Siemens and ST10 parts to 33 MHz. Only Nohau offers such high emulation speeds for the ST10 and C166.

The EMULST10-PC uses a compact two-board design for decreased weight. One board contains the bondout controller, adapter connections and support logic. The second board is the optional Trace Memory which includes Shadow RAM and Triggers. Nohau uses advanced FPGA and software design to give you superb debugging power and flexibility to find those bugs quickly.

Trace Memory and Triggers (optional)

The trace memory and triggers can be configured and viewed without intrusion into real-time emulation. This is accomplished using a dedicated 25 MHz housekeeping controller rather than stealing cycles from the emulation CPU.

Full pipeline decoding ensures only executed instructions and data read/writes are captured and no false triggering occurs. Source and assembly code is displayed in the trace window with other data.

Breakpoints, Shadow RAM and Real-time

Unlimited hardware and software breakpoints are offered and the Shadow RAM allows viewing memory contents in real-time. The RAM can be displayed in various graphical and data formats. The ST10 offers genuine real-time operation. It does not steal cycles from the bondout controller to perform housekeeping routines.

Internal and External Modes: Emulation Memory

The bondout controller provide emulation for both ROM and ROMless devices. Emulation memory comes in 256K and 1M versions with a granularity of 2 bytes and is software configured. The EMULST10-PC is Made in the USA and supported everywhere. Call Nohau today for your local representative or visit our website at www.nohau.com for further information.

NOHAU

ICE Technology
422 Peninsula Ave.
San Mateo, CA 94401

Tel: (800) 686-6428
Tel: (650) 375-0409

Email: sales@icetech.com

www.icetech.com